



Woongebouw Alexandrium [NL]

Projectboek Buurtpresentatie 23 maart

Datum 23 maart 2021

Opdrachtgever Triple Living

KCAP Architects&Planners

Thema wonen in Woongebouw Alexandrium

Woongebouw Alexandrium



Entrees in de plint



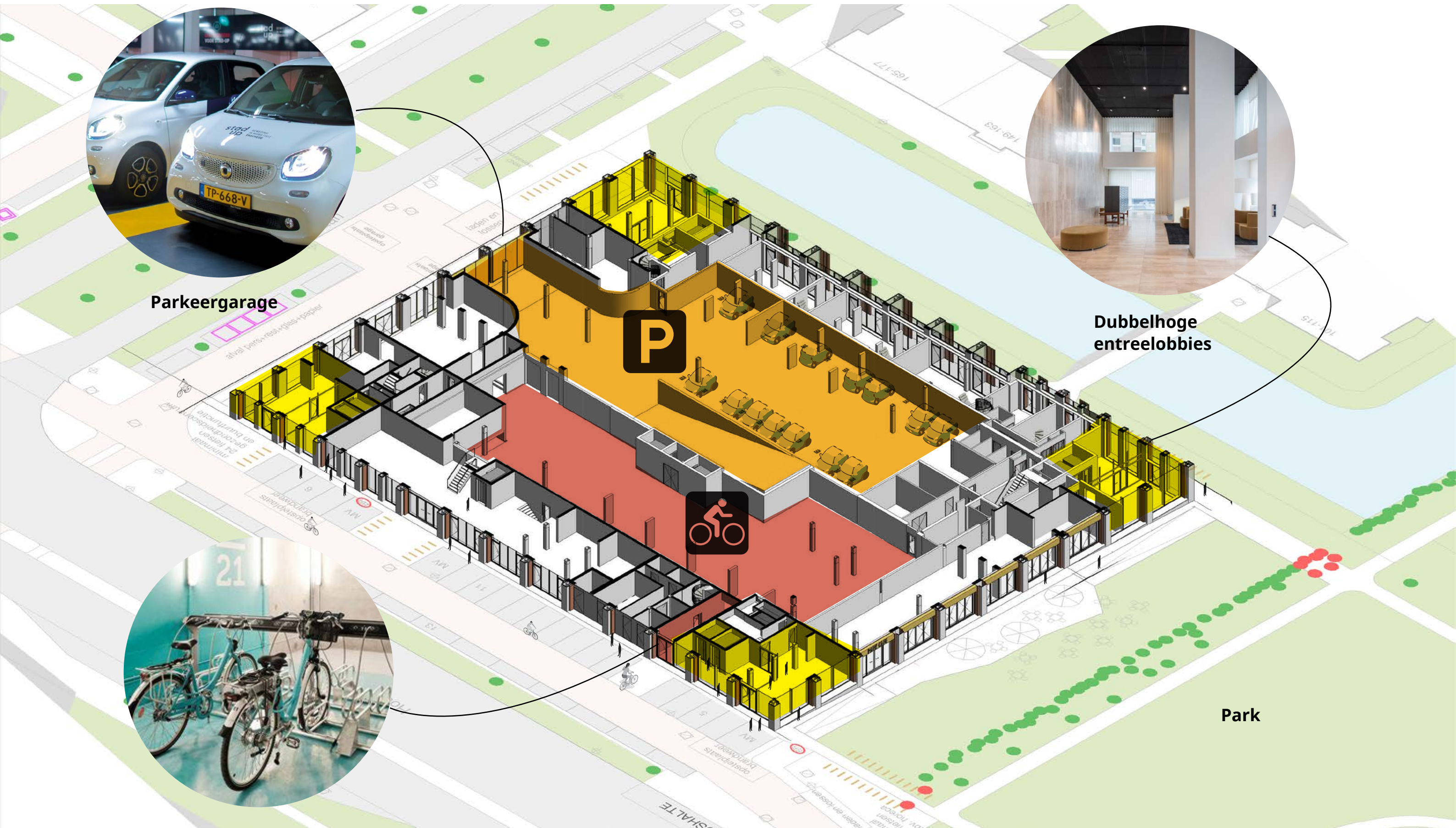
Parkeergarage



Dubbelhoge entree-lobbies

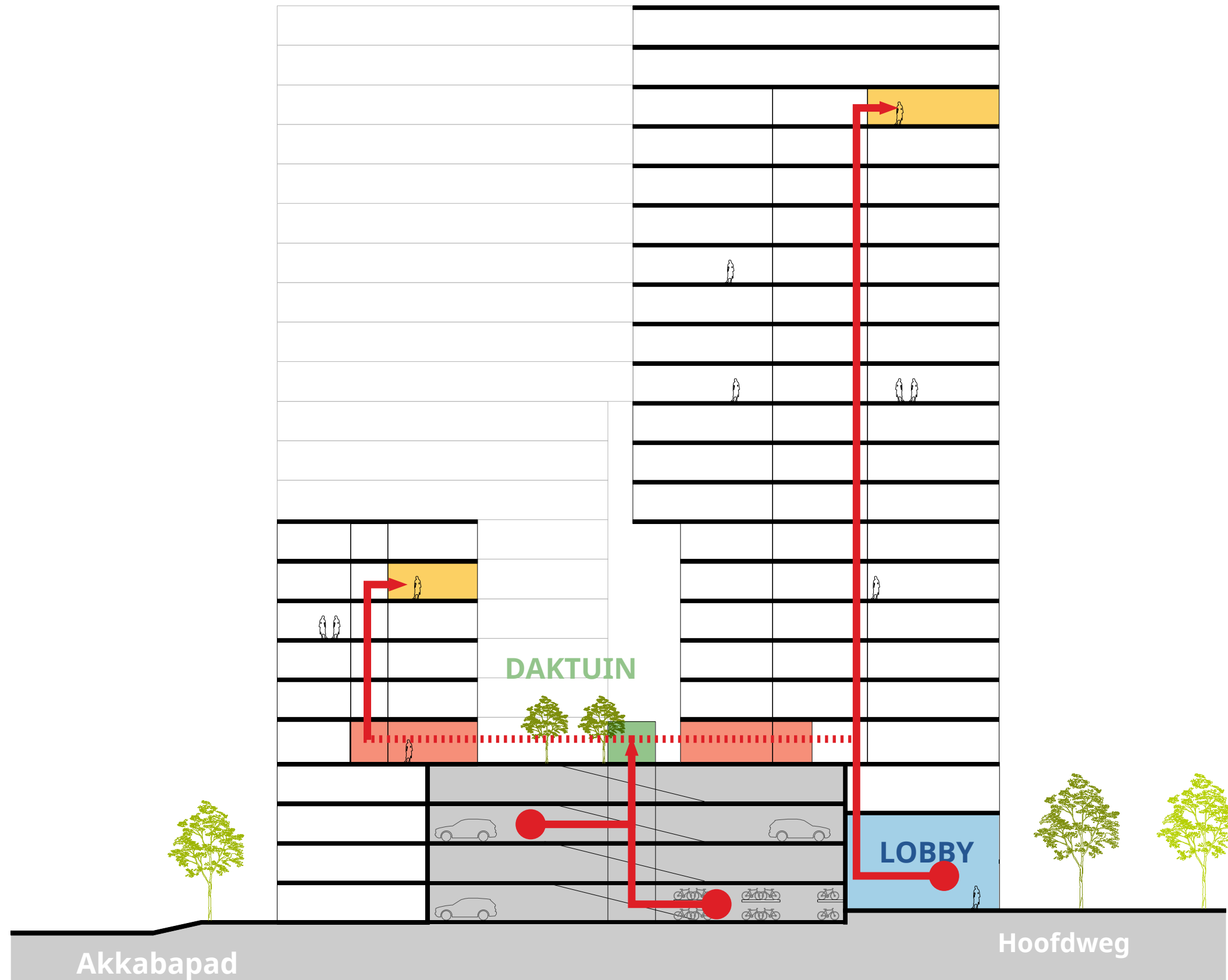


Fietsenstalling

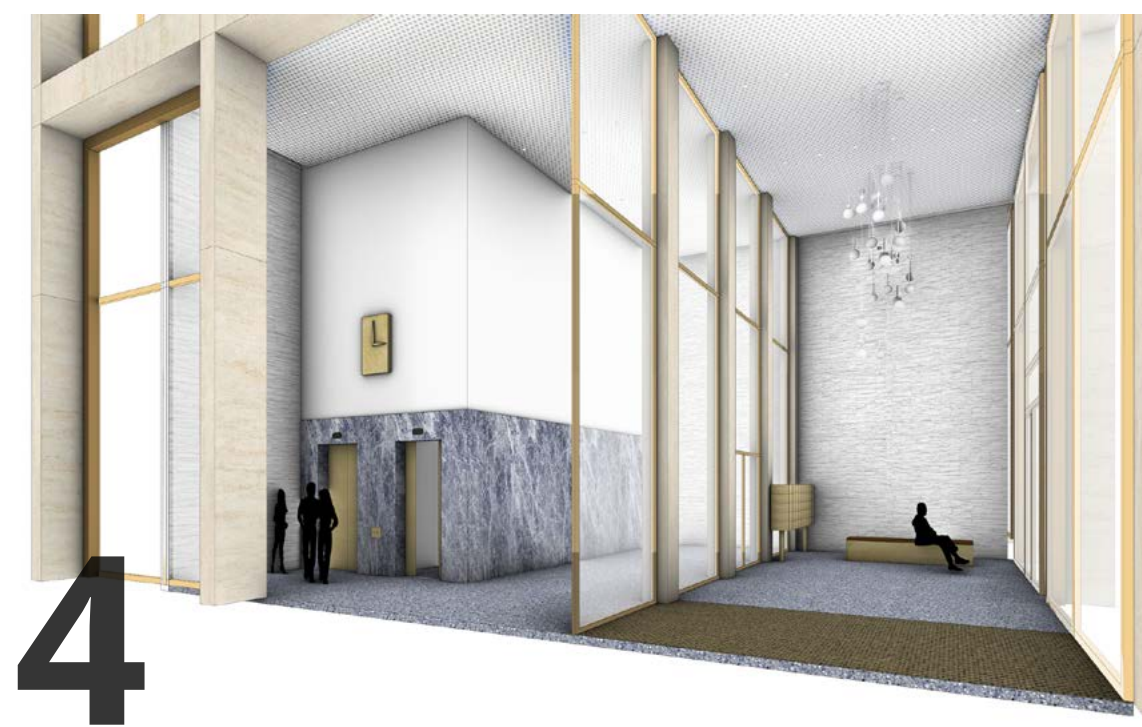
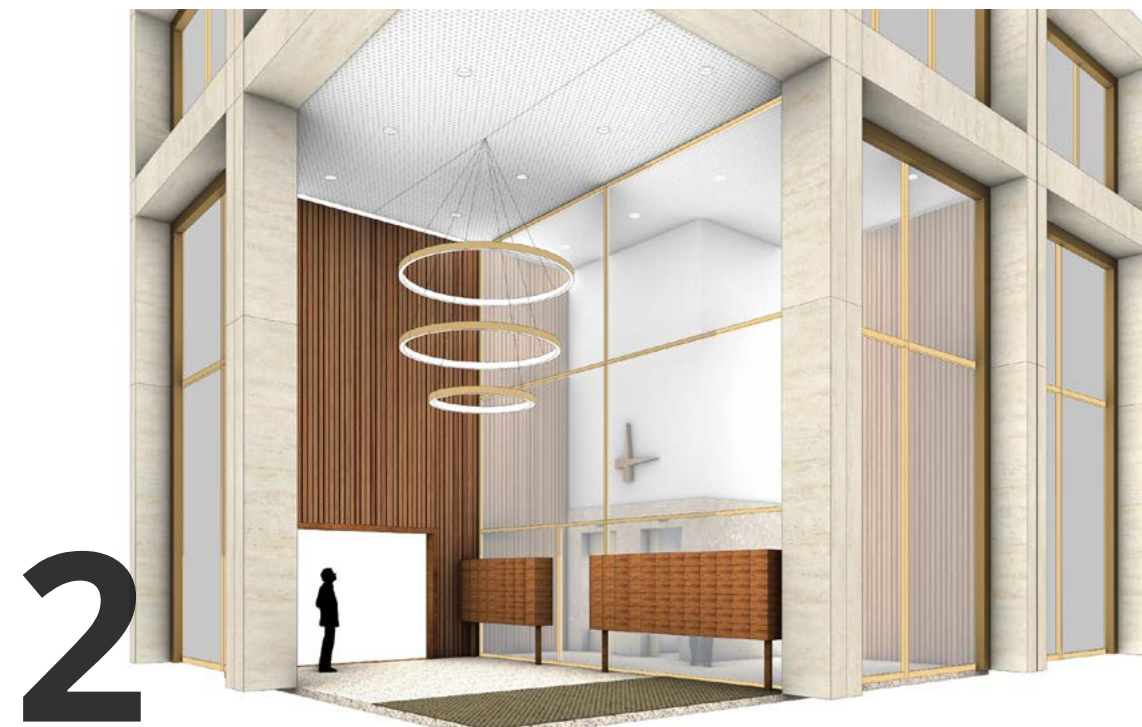
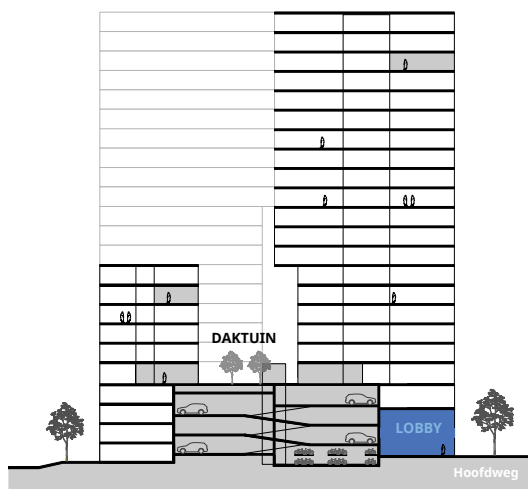


Park

Routing via daktuin naar woning



Dubbelhoge lobbies op de hoeken



Dubbelhoge lobbies op de hoeken



Lobby samengevoegd met pakketpunt



Zitgelegenheid



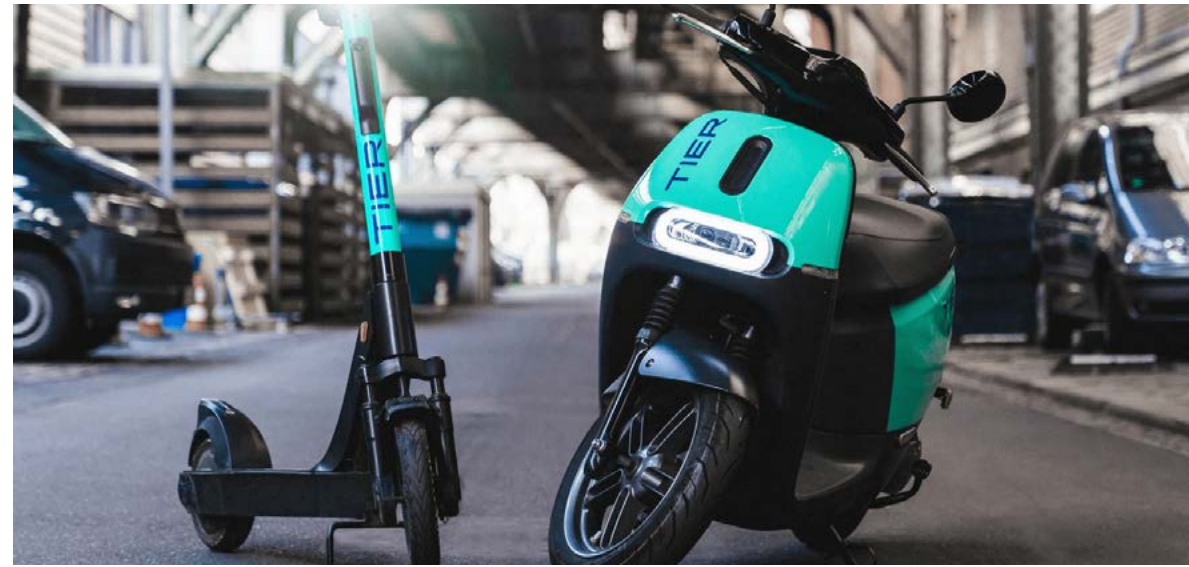
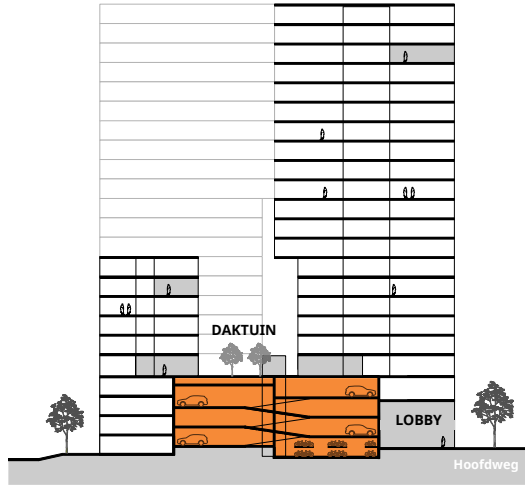
Lobby als verkeersruimte



Postkasten

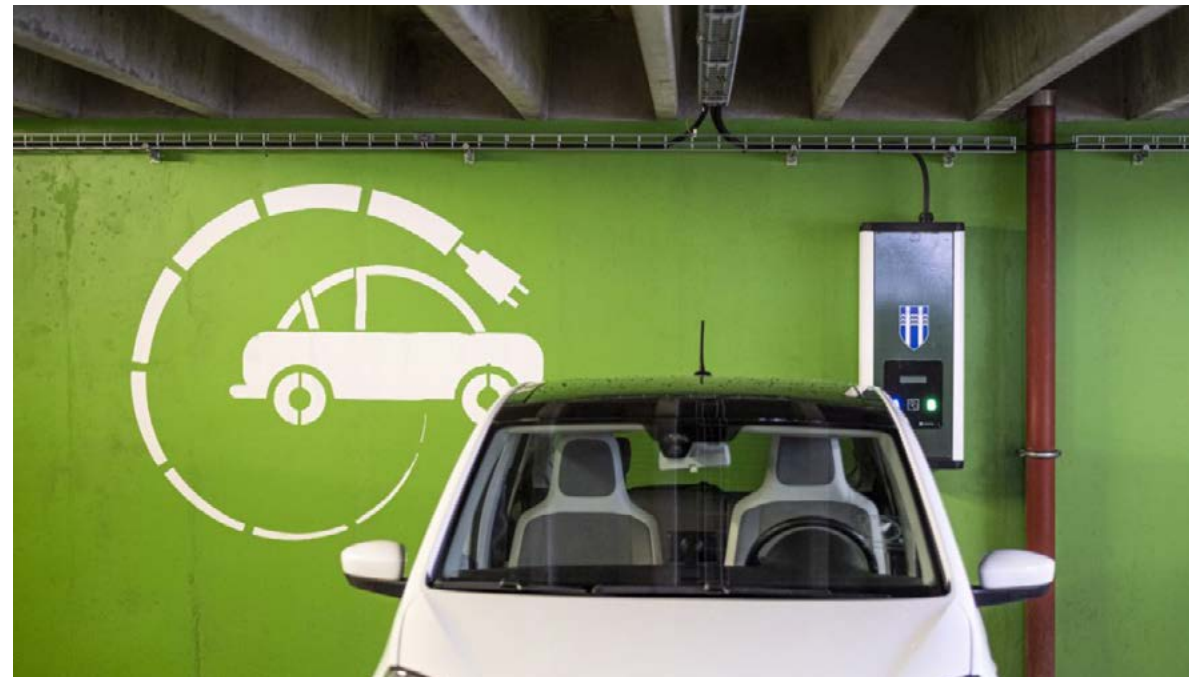


Parkeren in het hart

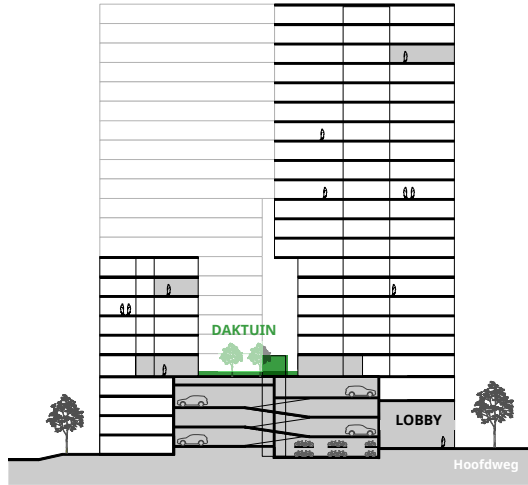


Mogelijkheid voor het stallen van:

- deelscooter
- deelstep
- deelauto
- elektrische auto
- elektrische fiets
- dubbellaags fietsparkeren
- bakfietsen
- ...



Bewonersdaktuin als ontmoetingsplek



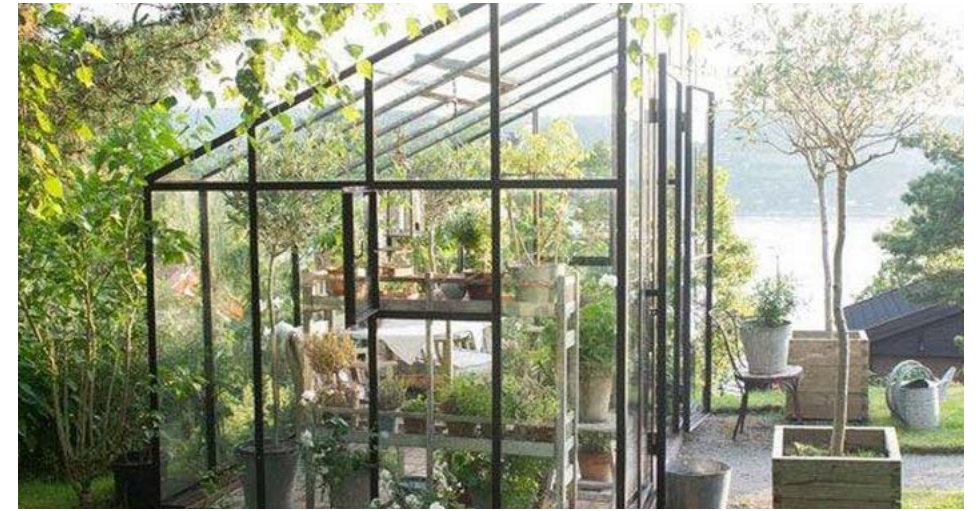
Bewonersdaktuin als ontmoetingsplek



speelplekken met toezicht vanaf prive-woning



Centrale ontmoetingsruimte



Opslag tuingereedschap en een tuinkas



'zwerfstoelen': zitten waar de zon is



Schommels



Ingetogen speelobjecten



Klein waterelement



Natuurlijk spelen

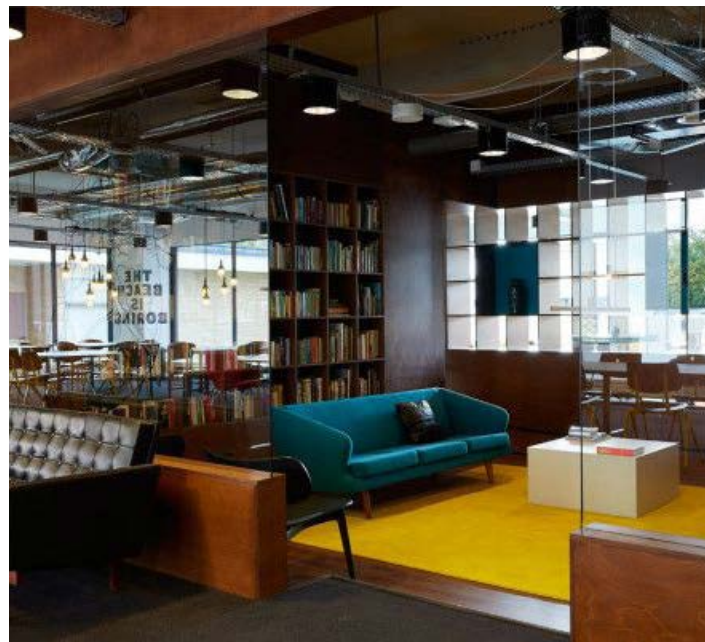
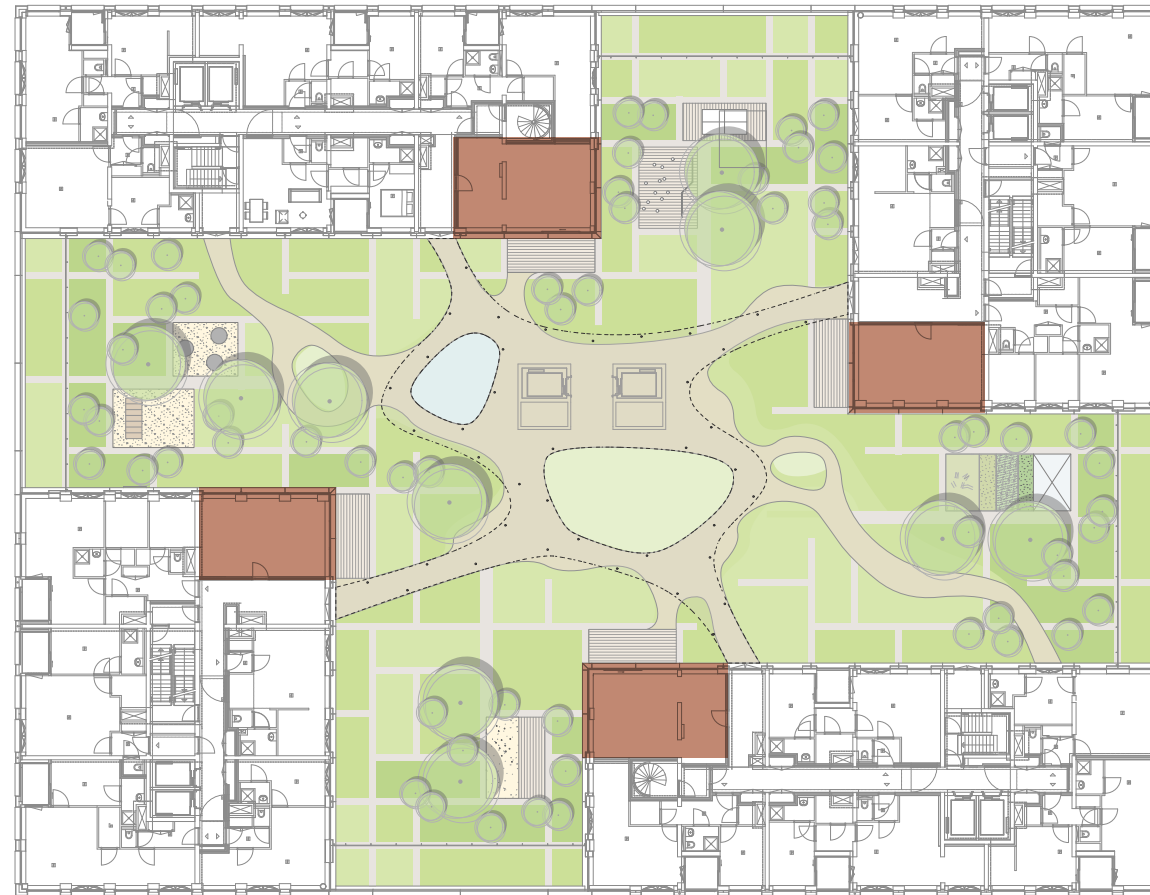
Bewonersdaktuin als ontmoetingsplek



Keuken



Speelplek

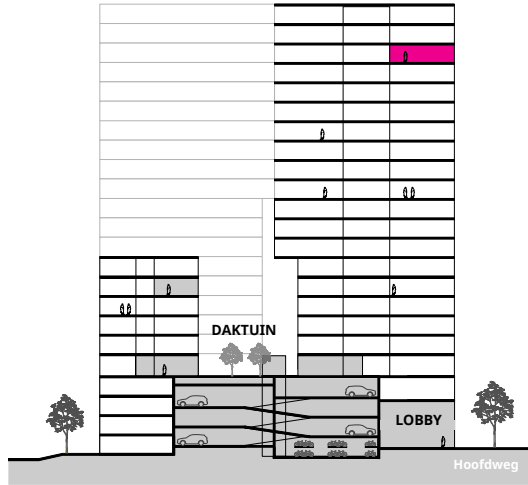


Woonkamer

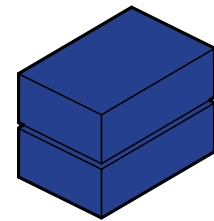
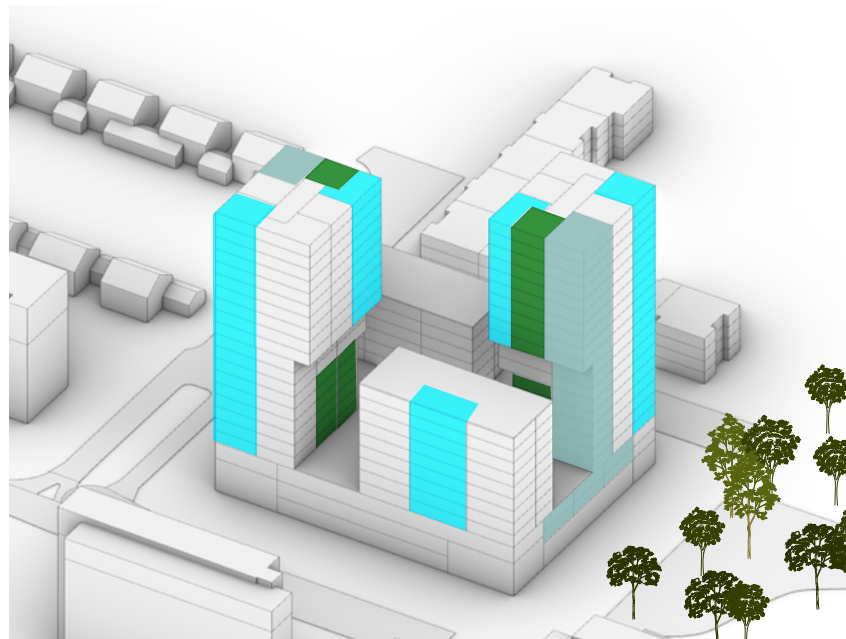
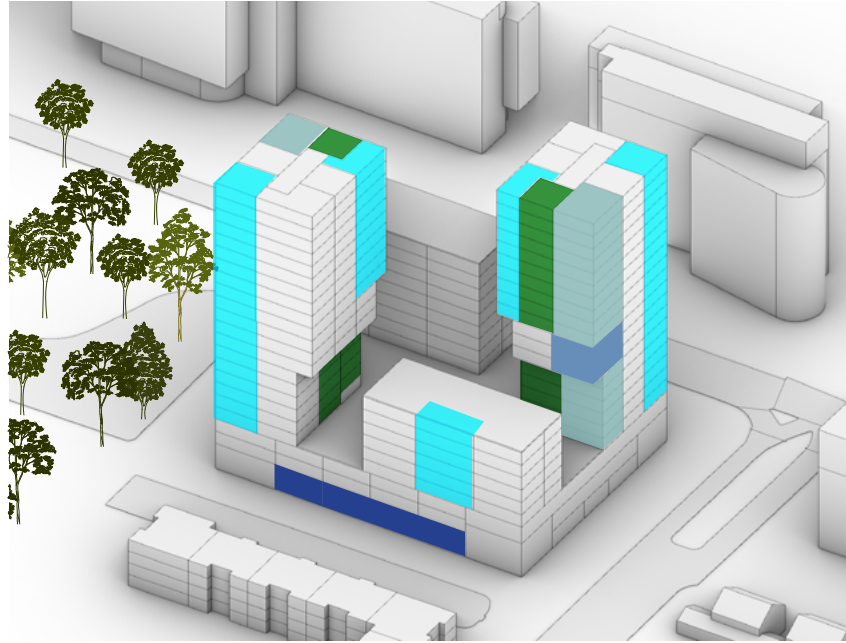


Werkplek

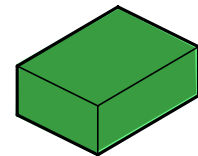
Wonen met uitzicht



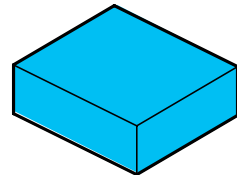
Woningtypes



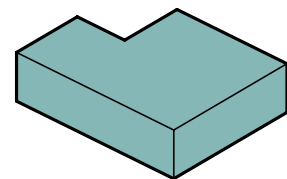
Maisonette
50 en 100 m2 GO



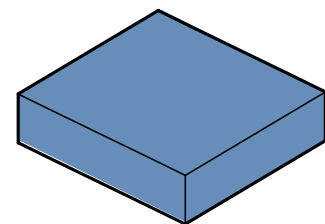
Studio
45-50 m2 GO



2-kamer
appartement
50-65 m2 GO



3-kamer
appartement
65-80 m2 GO



4-kamer
appartement
100 m2 GO

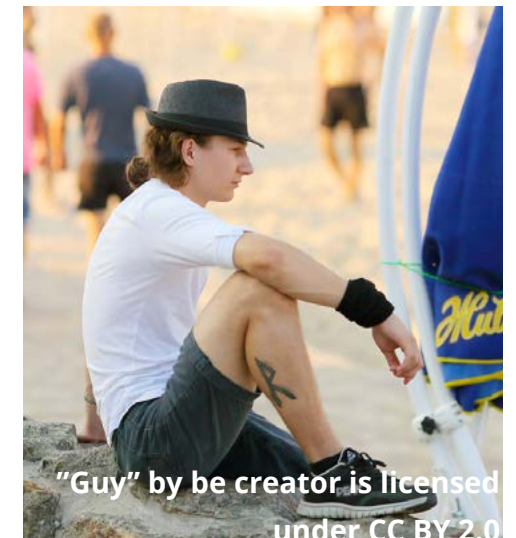
ca. 350 woningen:

Sociale huur	<750	0 %
Middenhuur	750-1050	50 %
Hoger	1050-1350	25 %
Top	>1350	25%

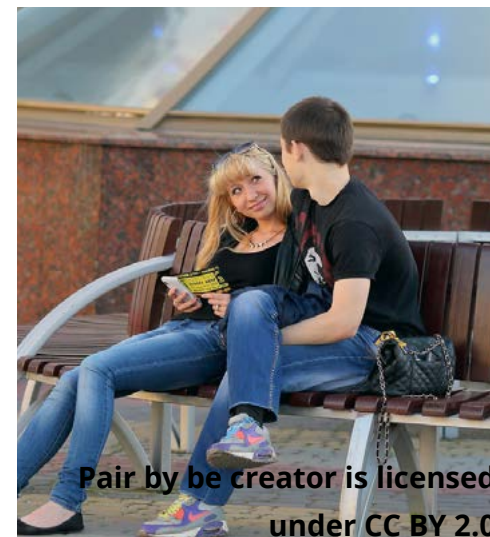
Prijzen worden geïndexeerd



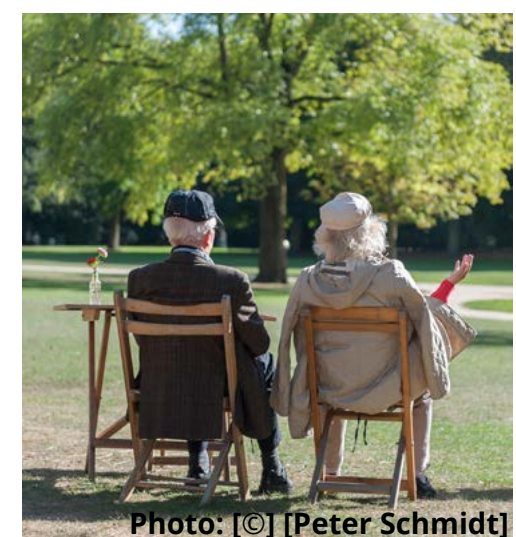
① start gezinnen



② alleenstaande

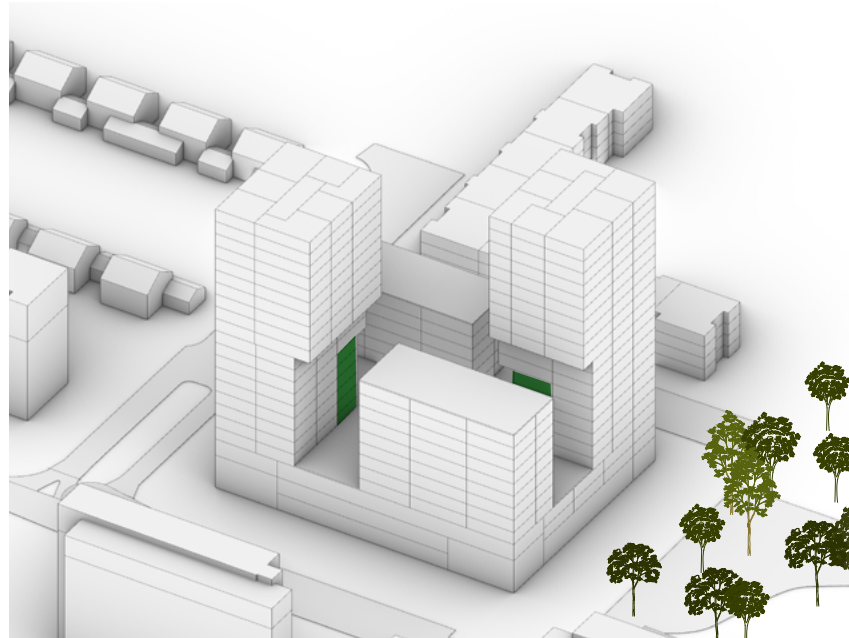
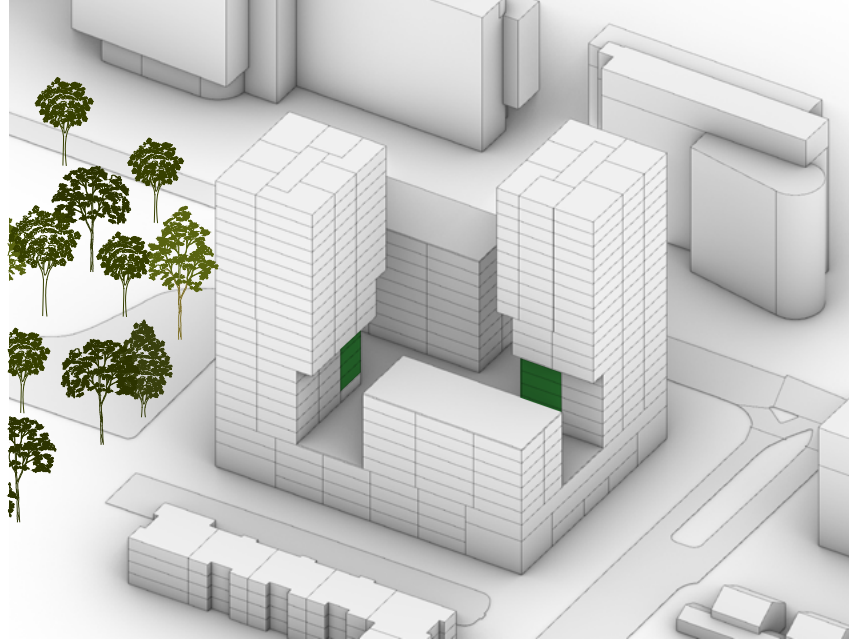


③ samenwonend



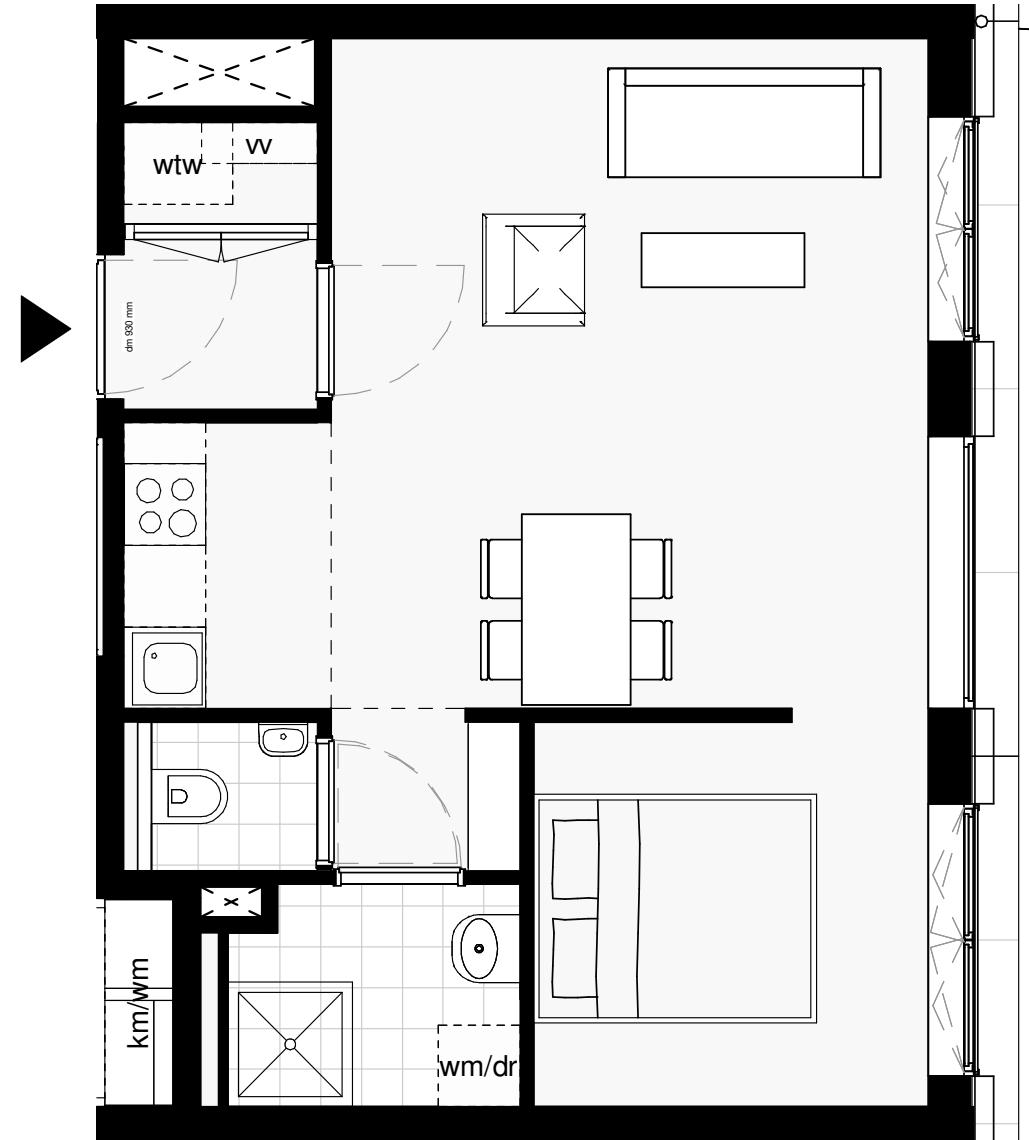
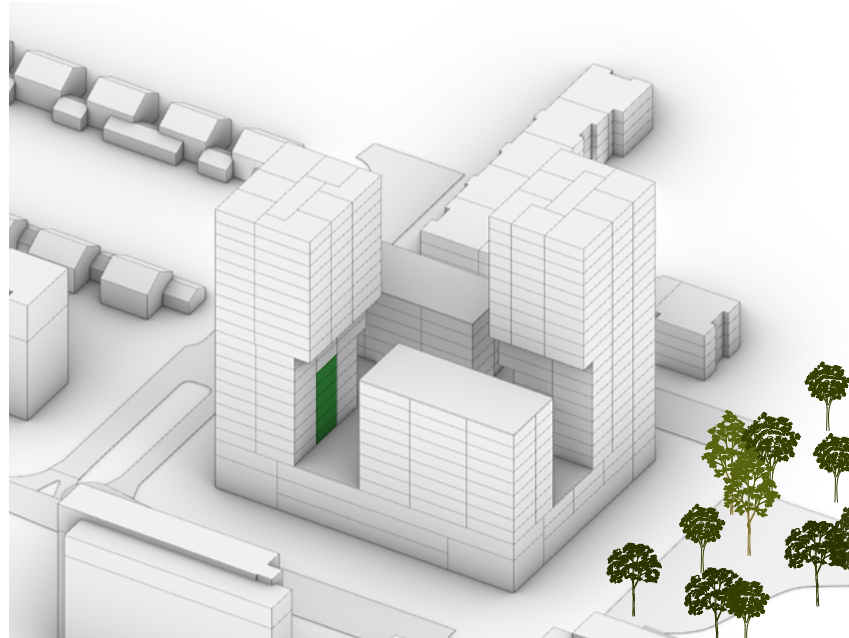
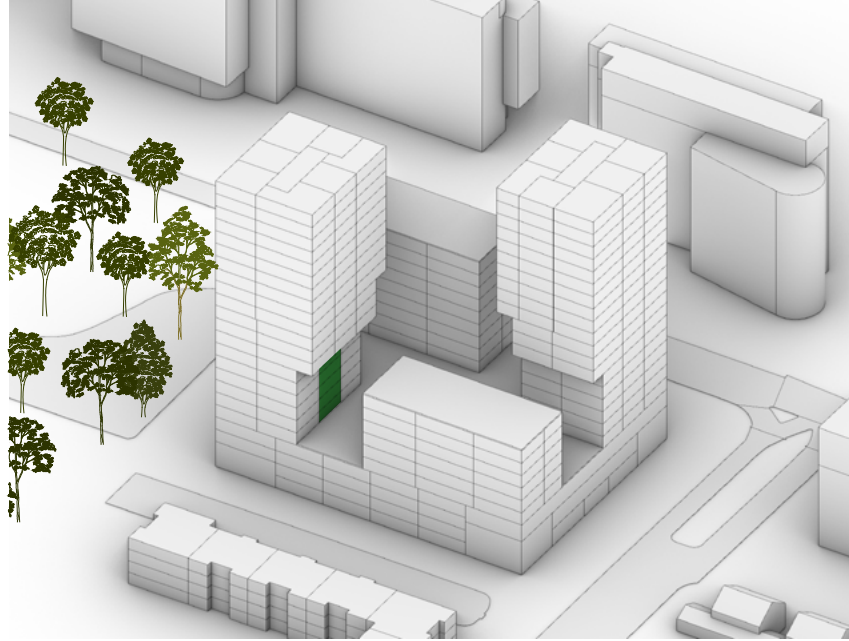
④ seniors

Studio



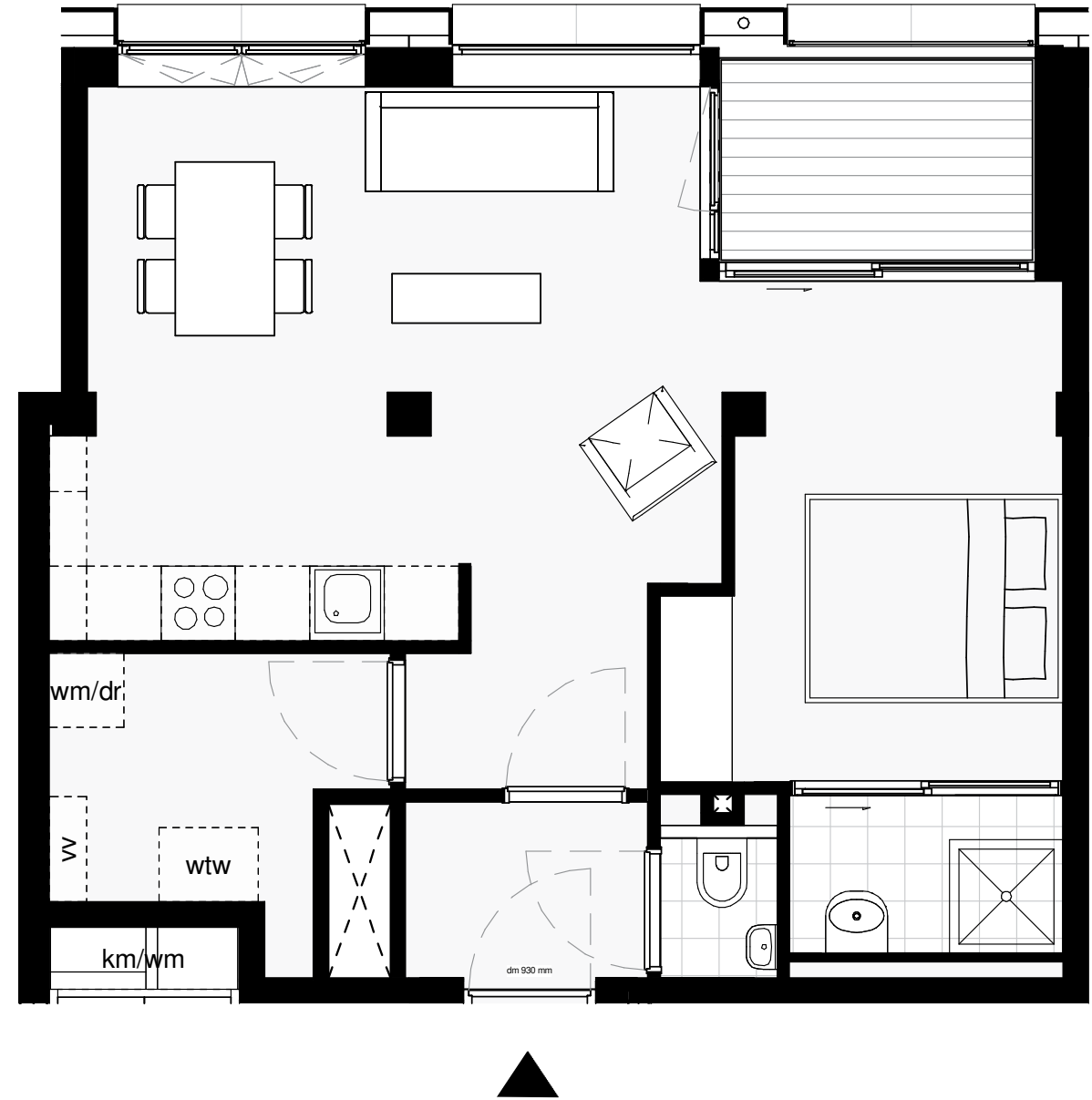
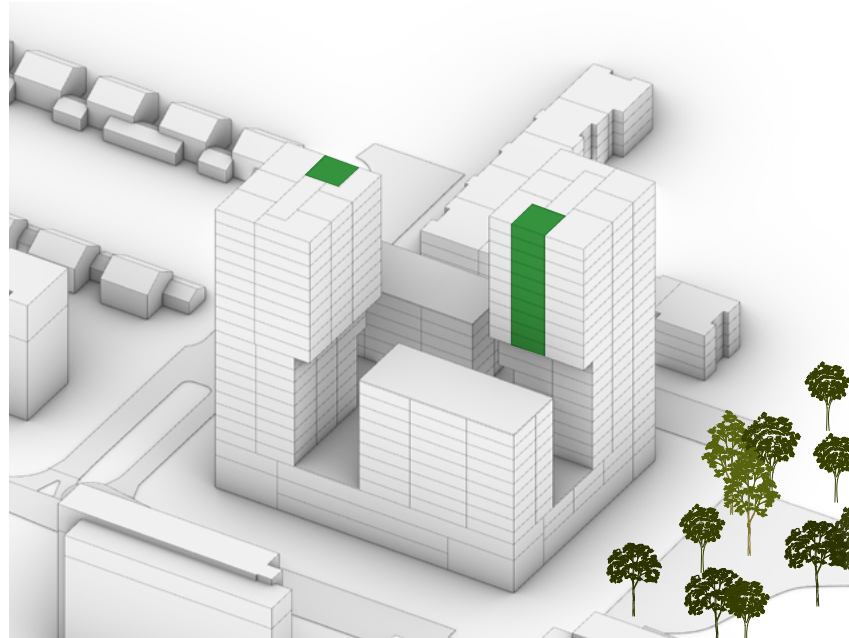
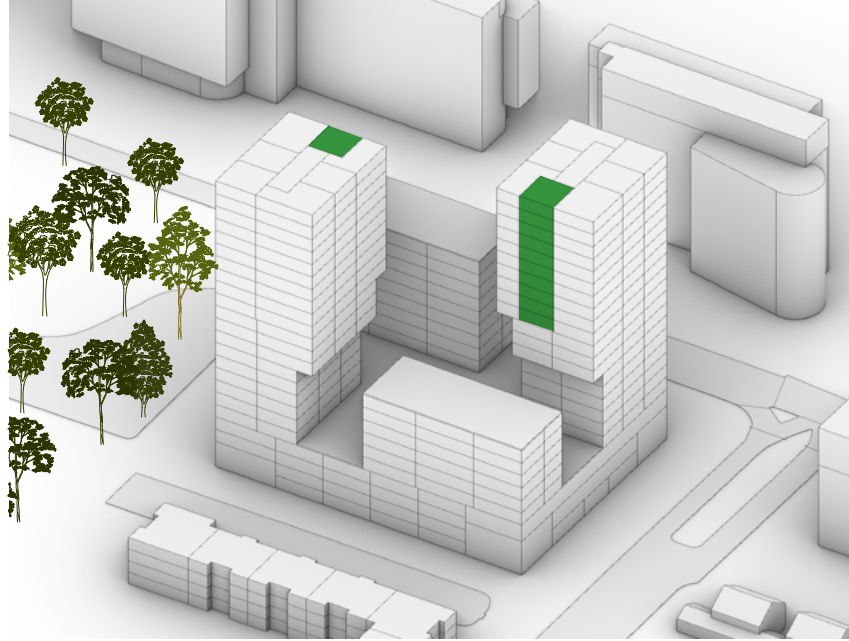
50 m²
Type D (10x)

Studio



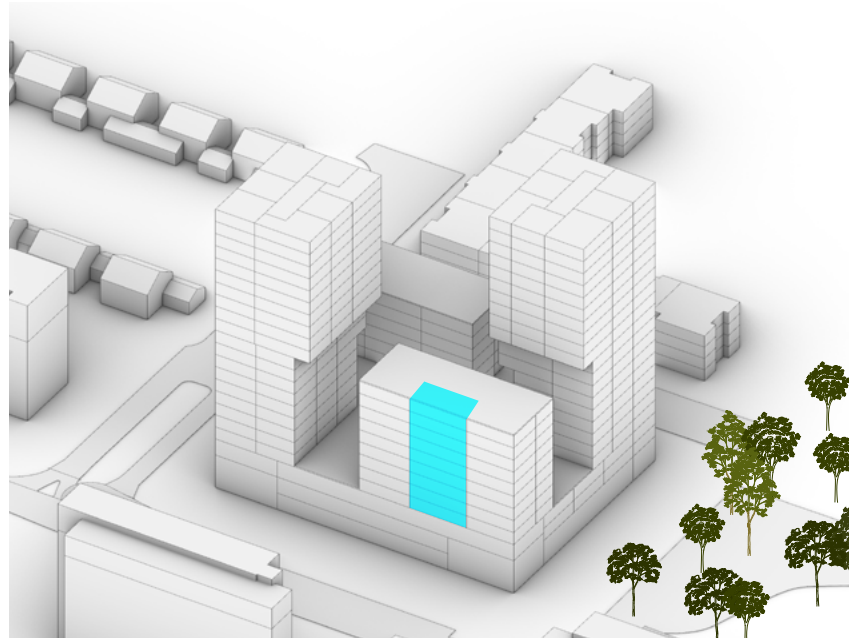
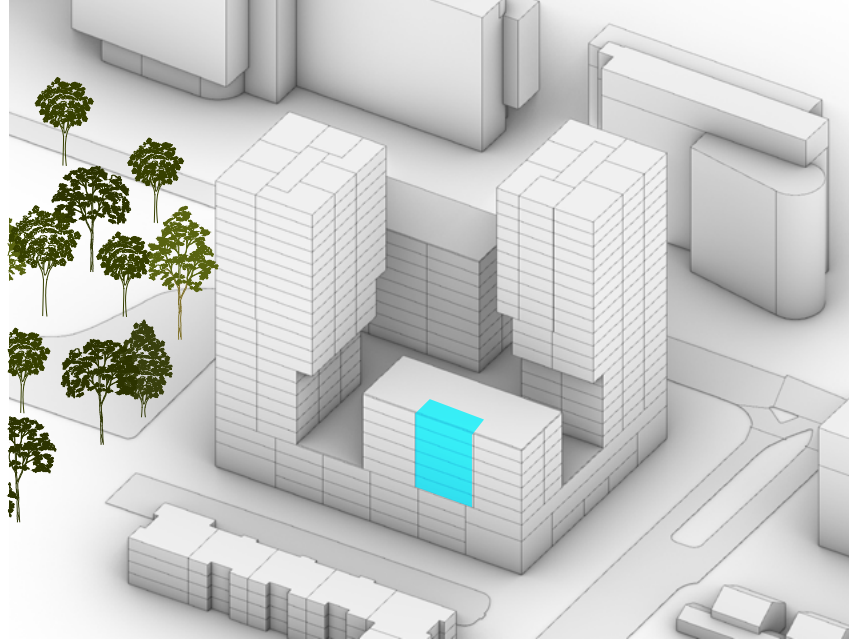
47 m²
Type E (15x)

Studio



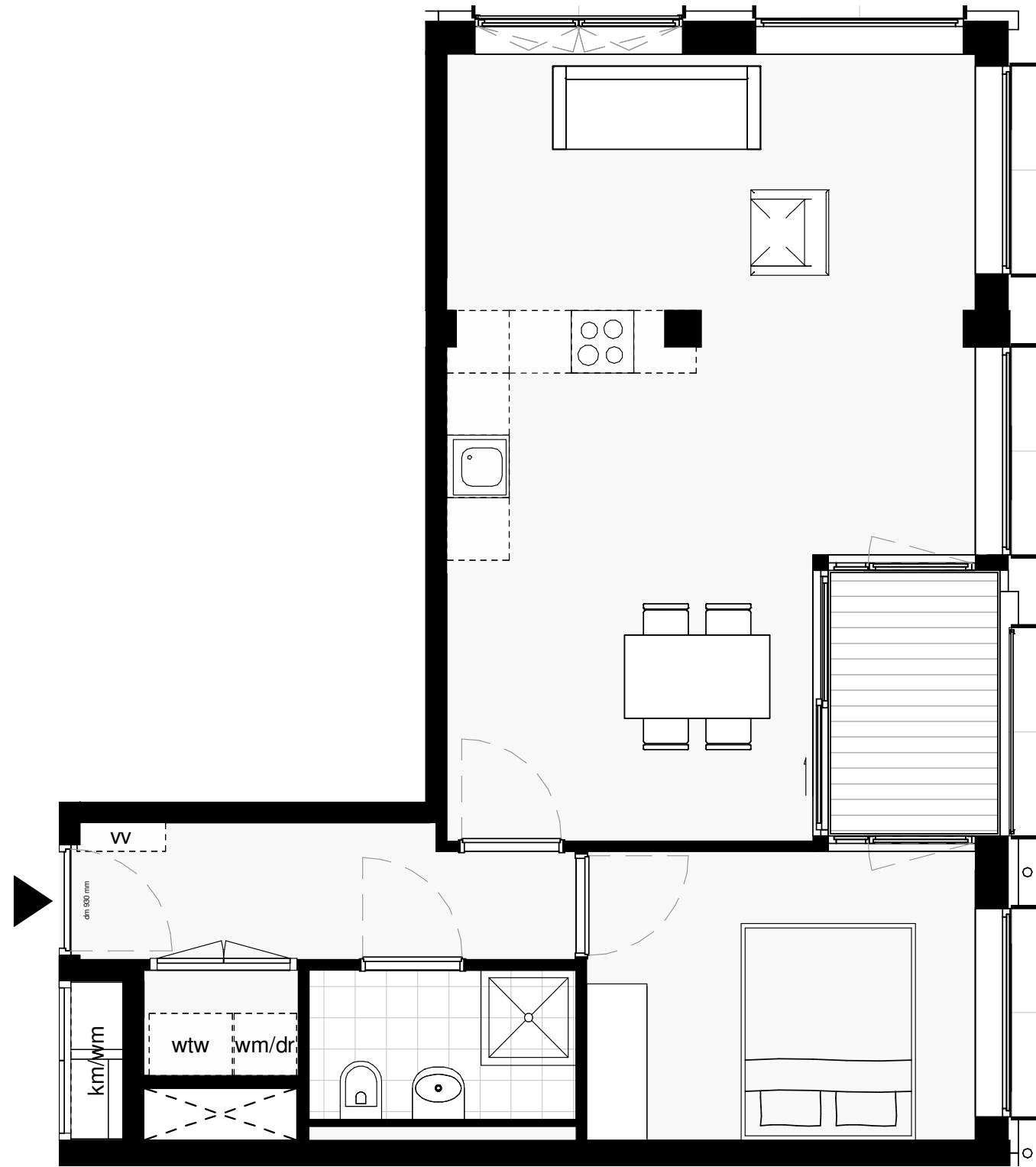
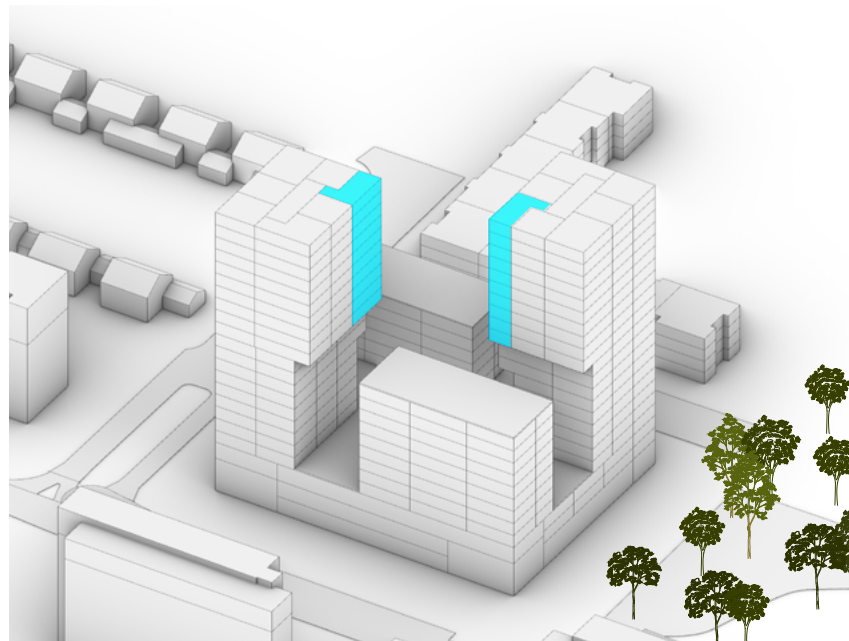
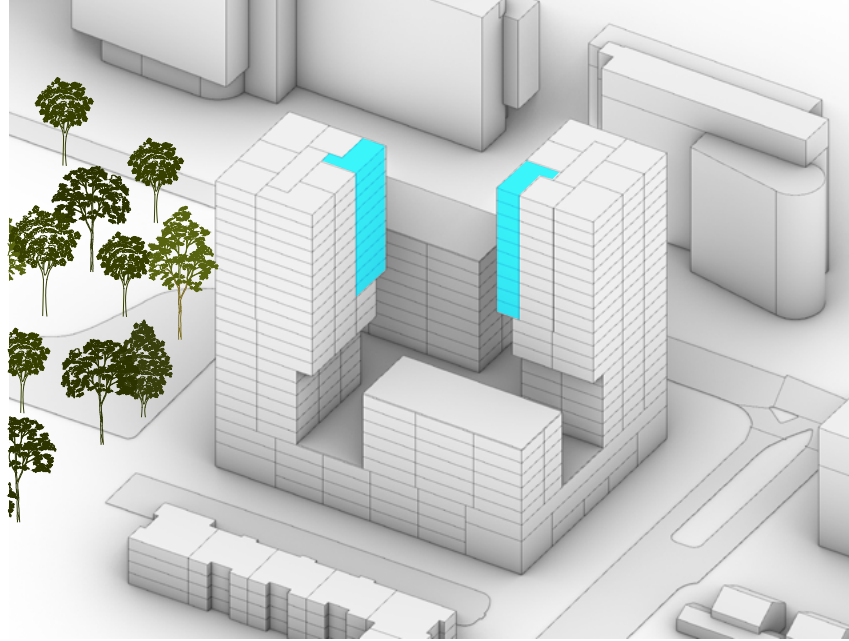
53 m²
Type M (20x)

2-kamer appartement



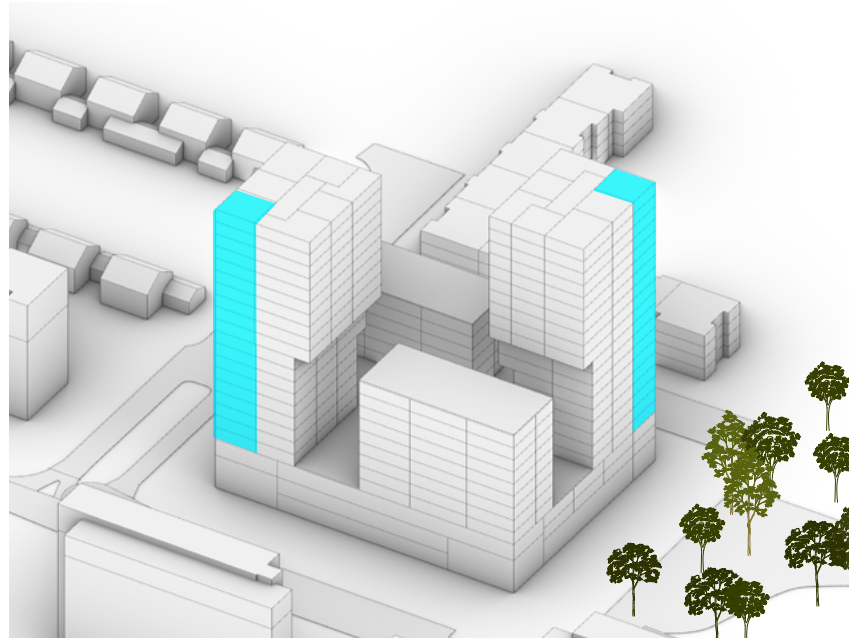
59 m²
Type W (13x)

2-kamer appartement



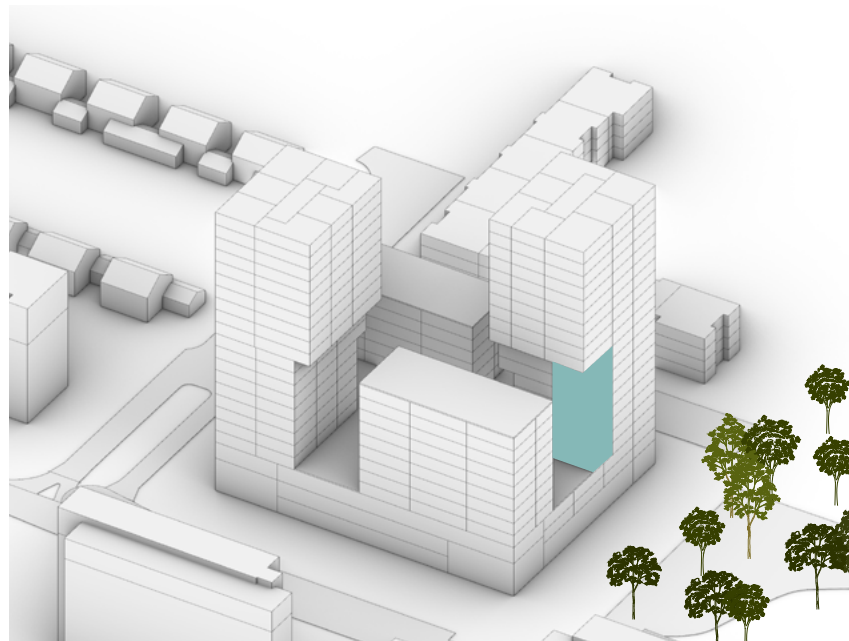
61 m²
Type N (20x)

2-kamer appartement



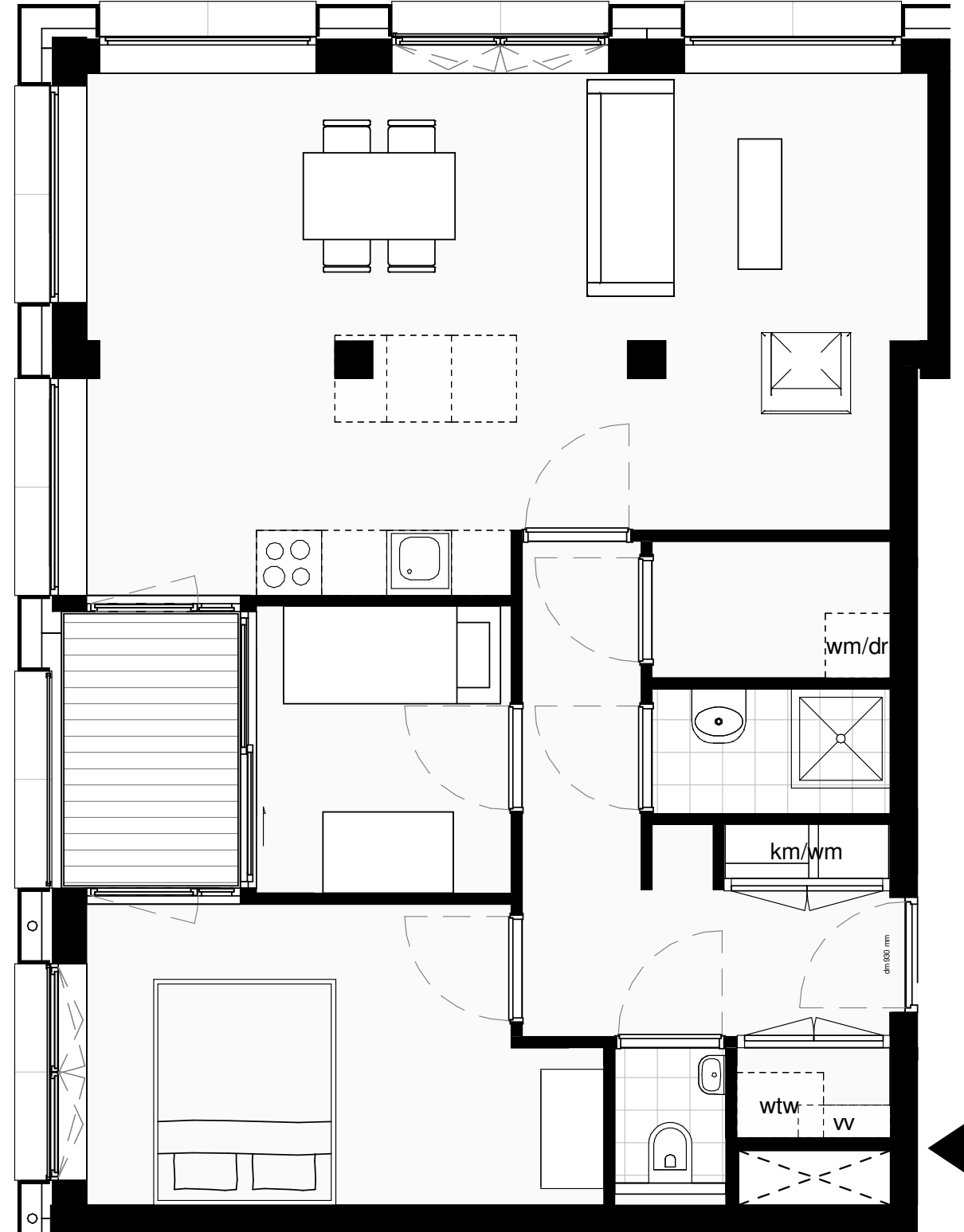
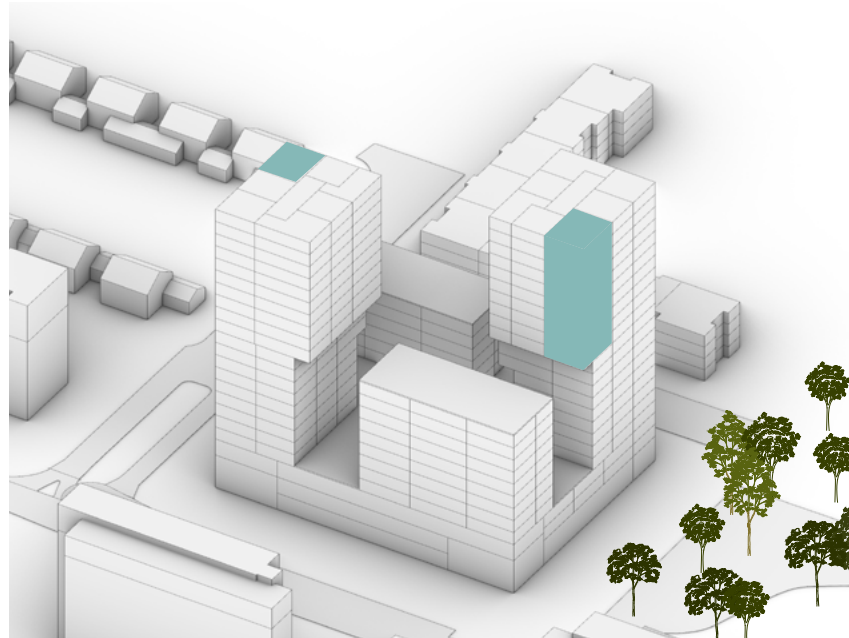
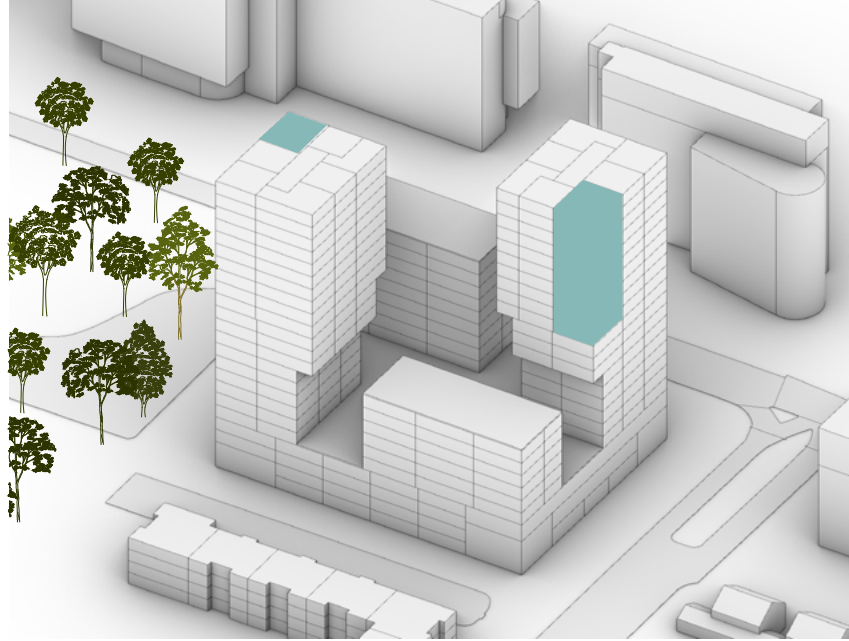
64 m²
Type A (38x)

3-kamer appartement



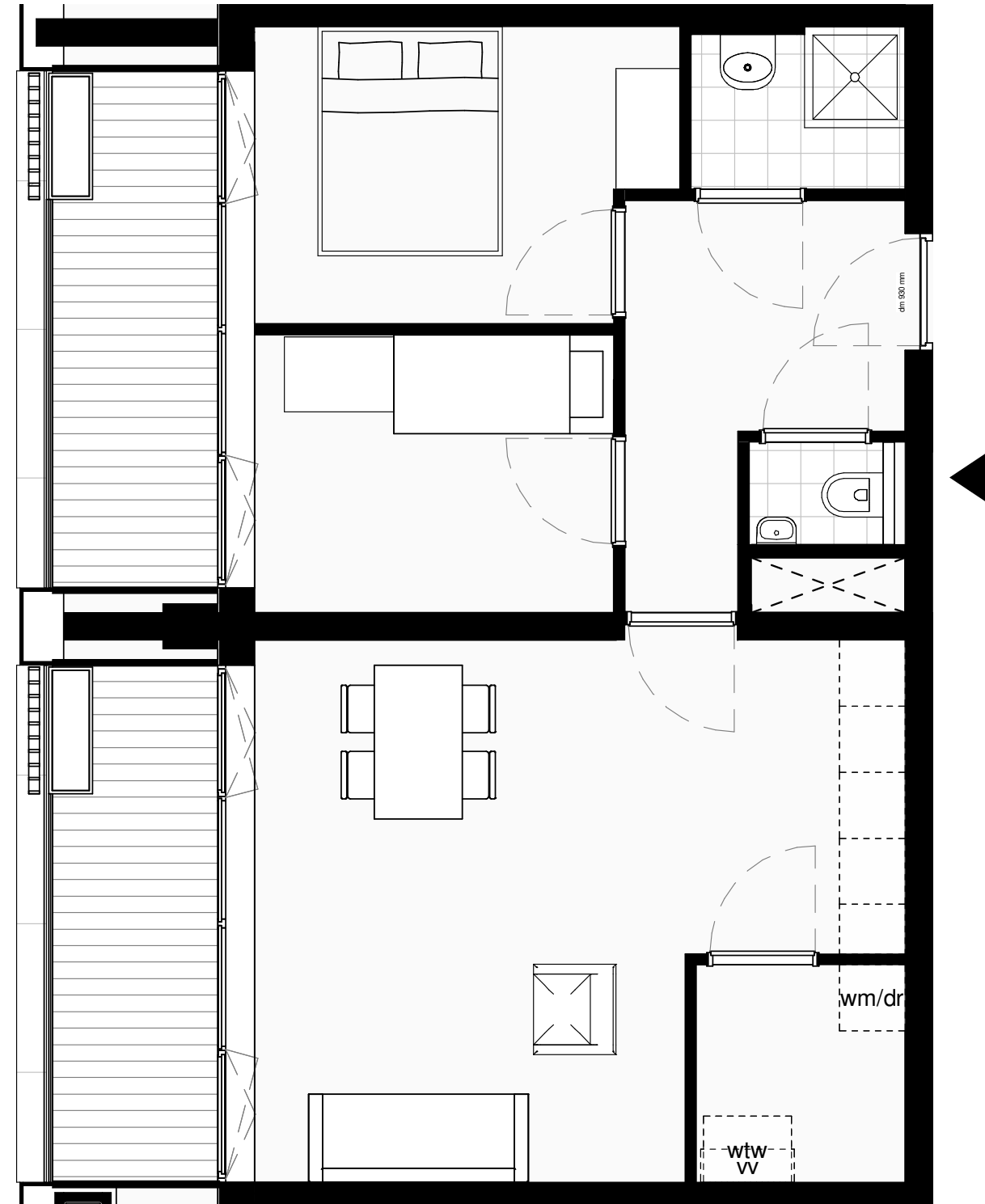
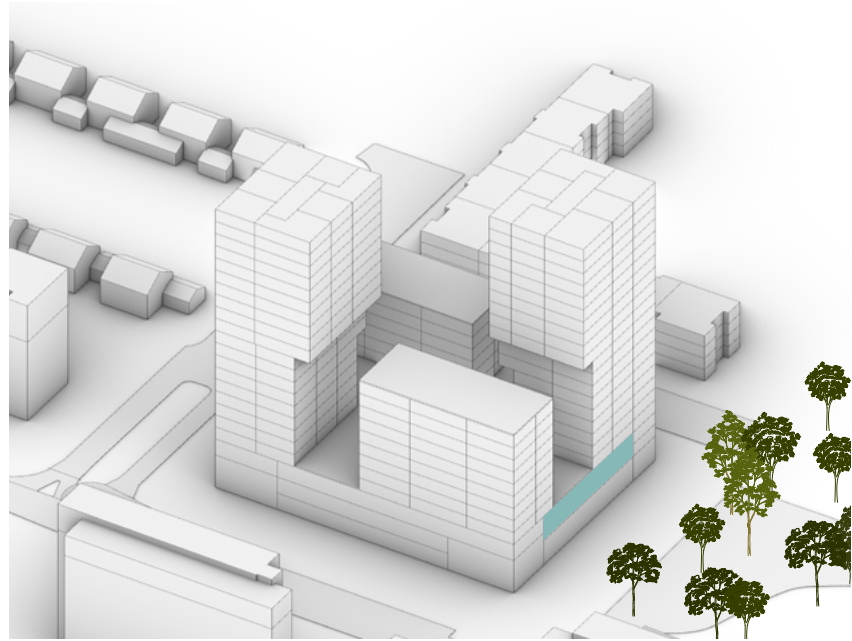
72 m²
Type C1 (13x)

3-kamer appartement



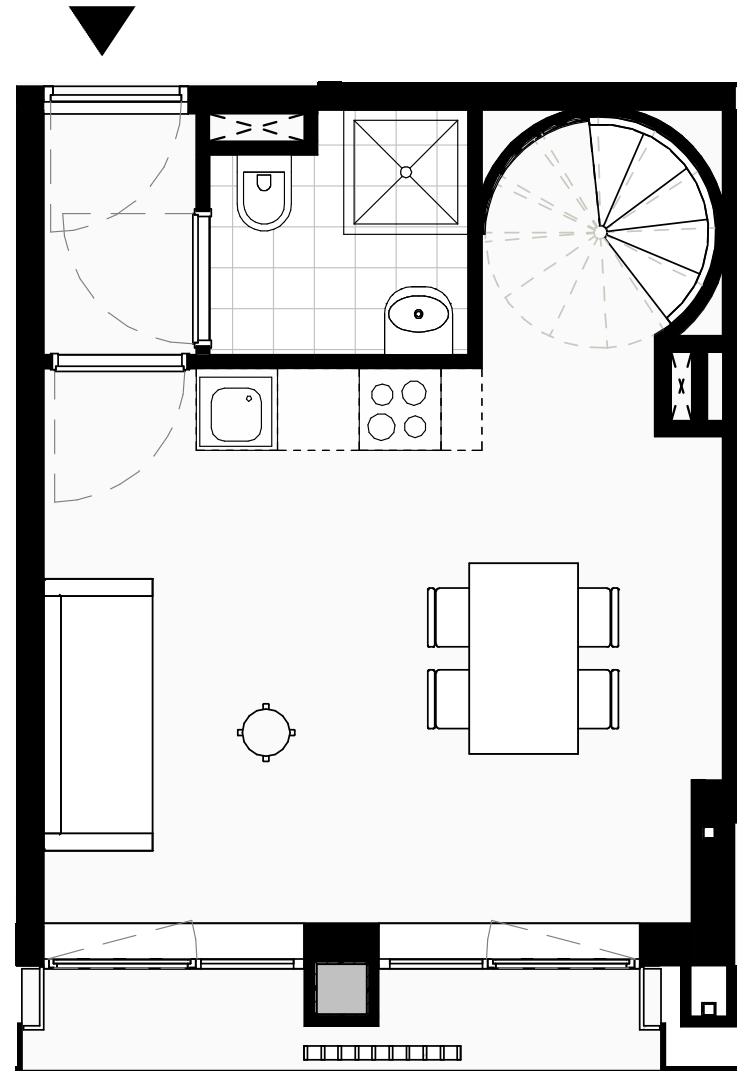
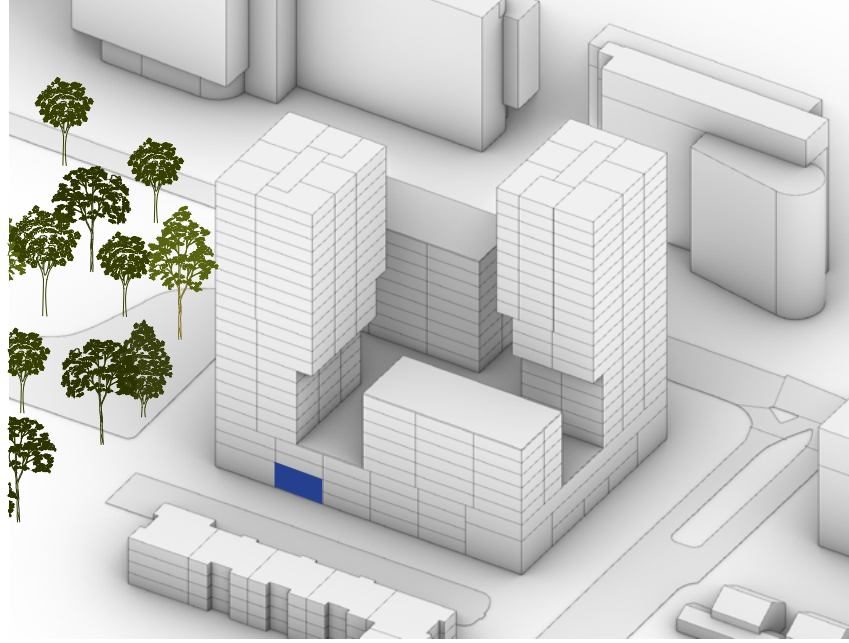
76 m²
Type L (20x)

3-kamer appartement

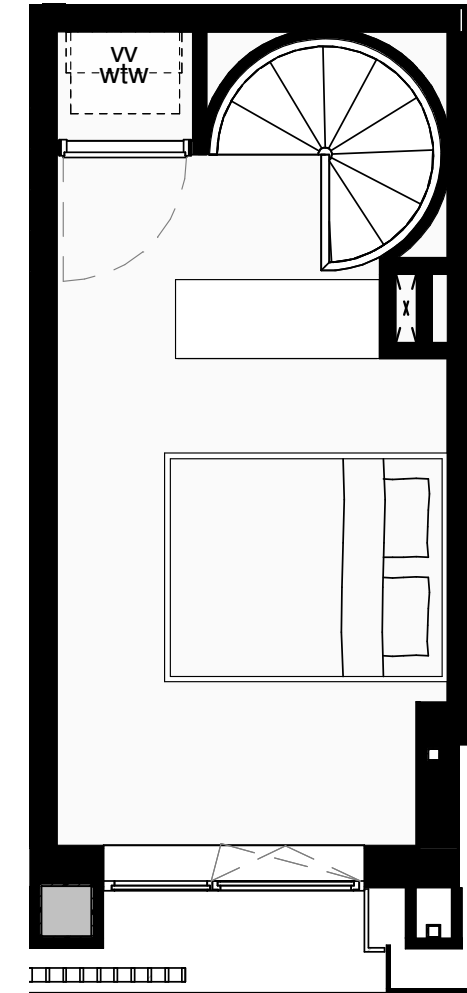


62 m2
Type P4 (6x)

Maisonnette



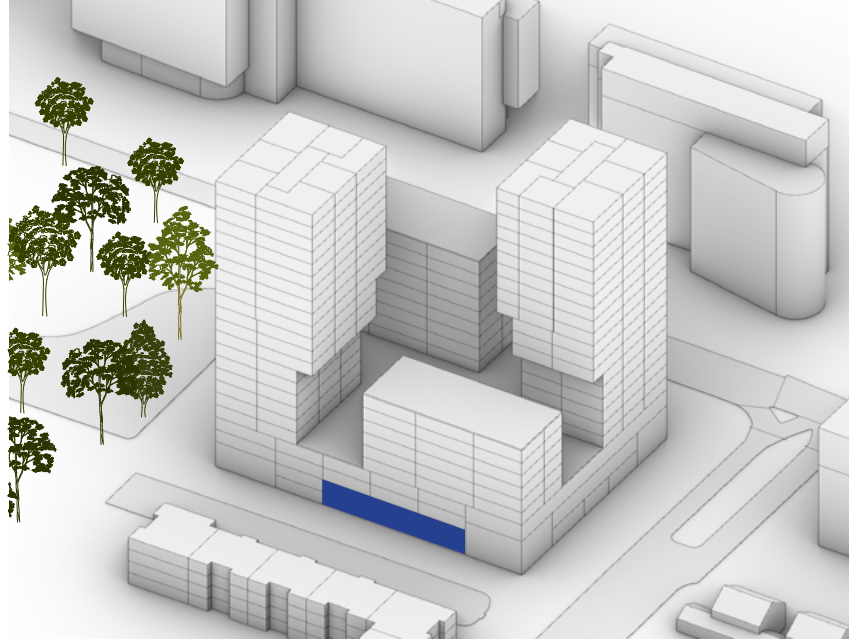
Begane grond



1e verdieping

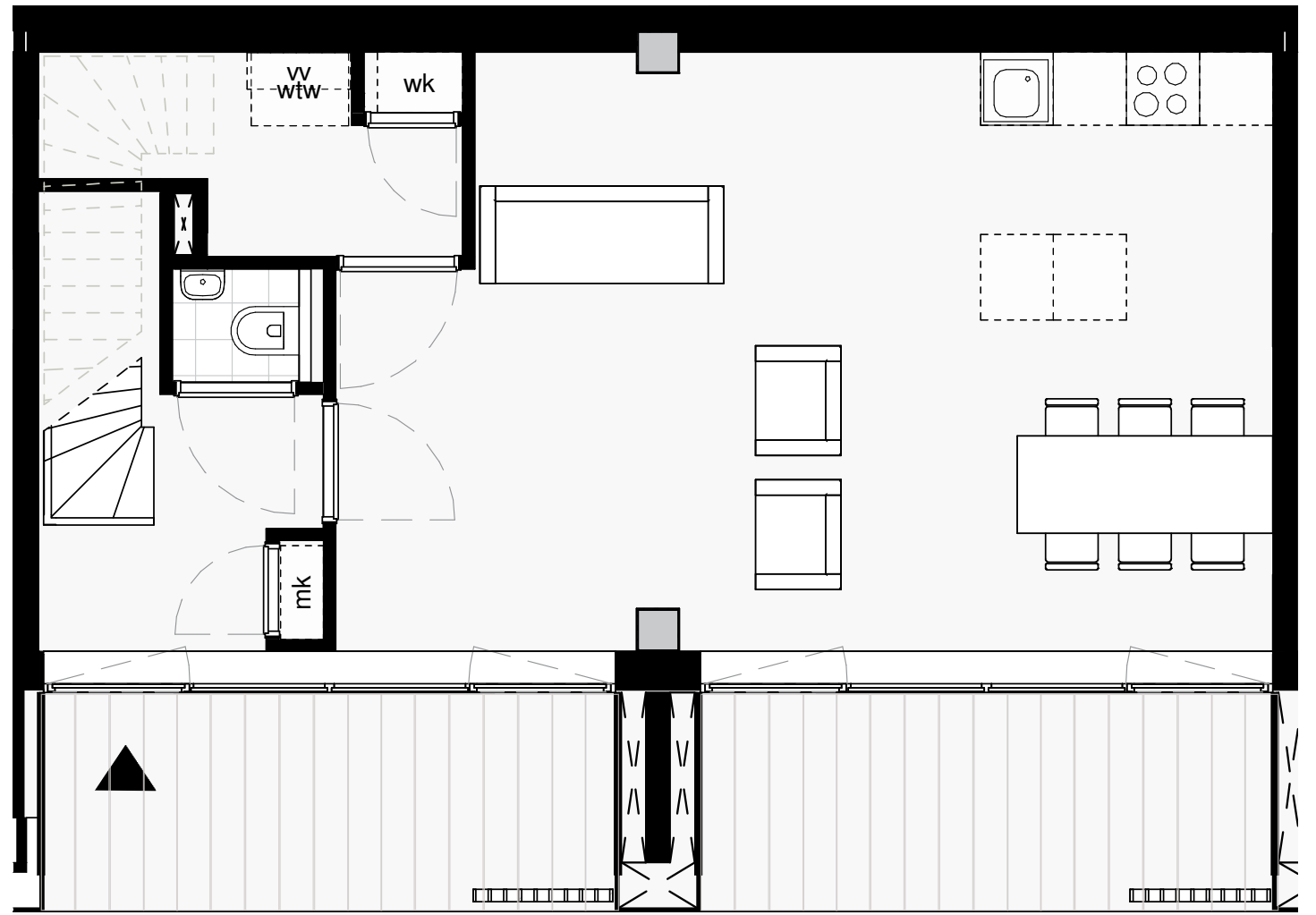
**46 m²
Type P1 (2x)**

Maisonnette

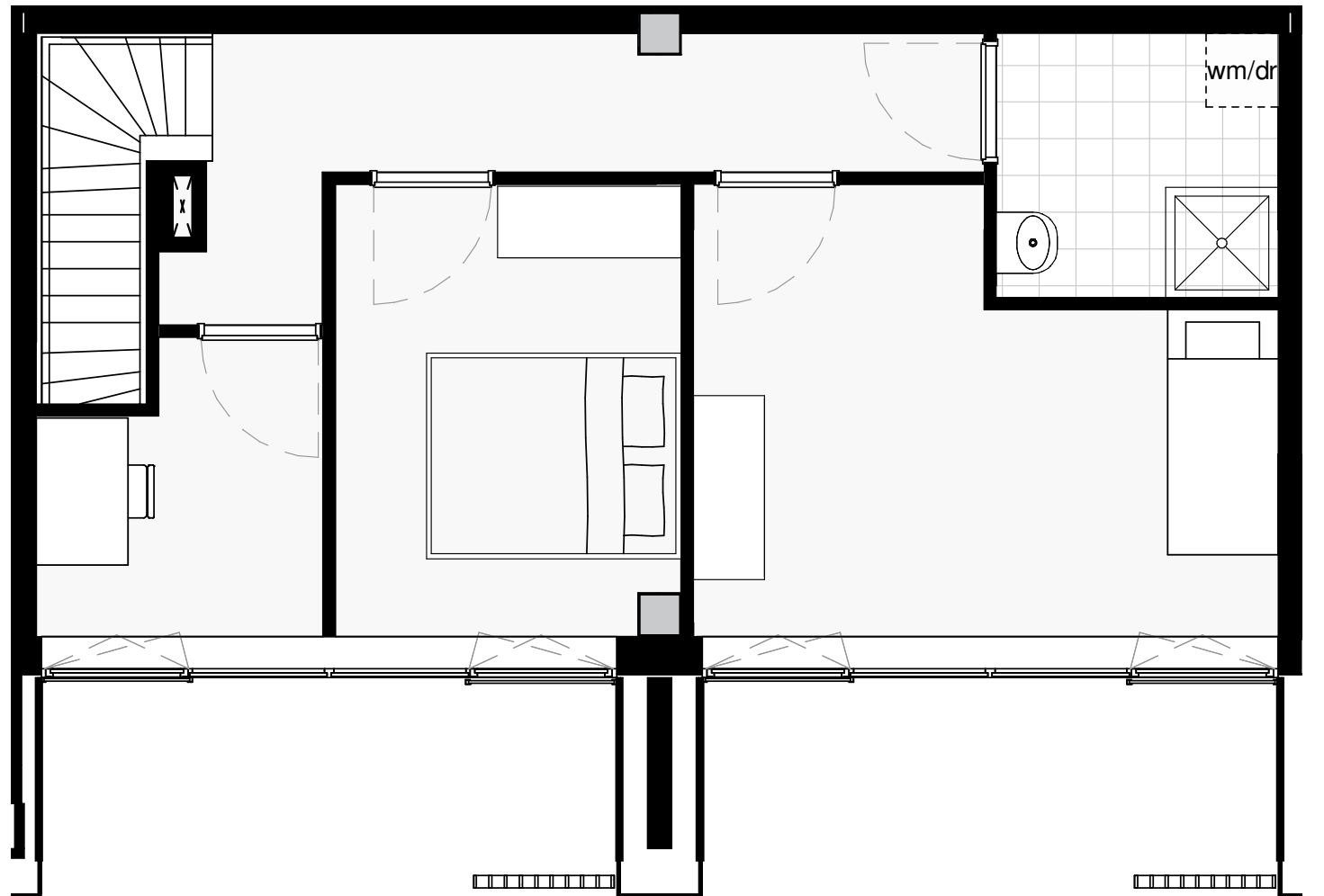


100 m²
Type P2 (3x)

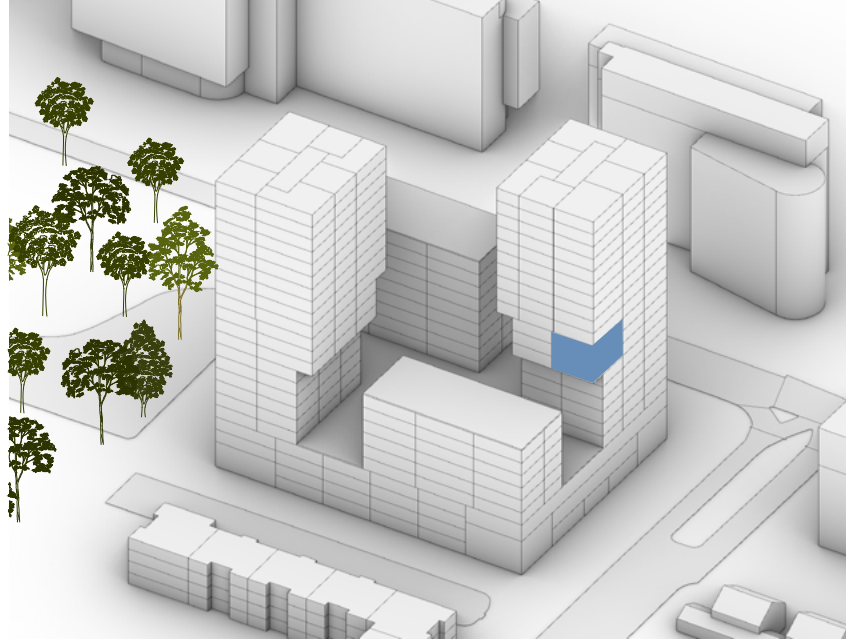
Begane grond



1e verdieping



4-kamer appartement



101 m2
Type K (3x)